



ReRoof America, SM, Inc.

1-800-280-2872

SLOPED BEATS FLAT SM 88'-5" CURA®

TOP MEMBER

CURA RETROFIT FRAMING SYSTEMS PROVIDE...

SLOPED ROOF BENEFITS

- ✓ Eliminates ponding water; provides run off
- ✓ Reduces maintenance costs
- ✓ Improves roof performance and extends roof life
- ✓ Virtually eliminates potential for roof collapse due to weight of ponded water
- ✓ Improves insulation qualities of roof; saves owner heating and cooling costs

ADAPTABILITY

- ✓ Fits over virtually any existing roof without expensive roof tear-off
- ✓ Can be designed for use with any roof, fascia or soffit system
- ✓ Can be designed for extreme snow, hurricane and/or earthquake loads
- ✓ Provides superior structural support
- ✓ Lightweight framing system that minimizes dead load

ADJUSTABILITY

- ✓ Provides an even roof slope
- ✓ Reduces labor cost from in-the-field cutting, drilling or welding
- ✓ Reduces errors and reworking
- ✓ Adjustable top-clip self-aligns with the vertical web member and aligns the top member (purlin) in the plane of the new roof

ENGINEERING/TECH SUPPORT

- ✓ Provides design, shop drawings, structural calcs, attachment requirements, parts allocation information, and suggested erection procedures
- ✓ Provides technical assistance throughout the sales, design and construction process

TRAINING/IN-FIELD SUPPORT

- ✓ Offers sales and erection training
- ✓ Offers in-field support for start-up or problems

FACTORY-CUT COMPONENTS

- ✓ Reduces erection costs by transferring field labor costs to the factory
- ✓ Makes quality control of the framing components easier
- ✓ Components available in Red Oxide or Galvanized finishes

QUICK, EASY ERECTION

- ✓ Reduces construction time and costs
- ✓ Minimizes disruption for building owner/tenants
- ✓ Helps the contractor meet construction schedule
- ✓ Increases owner and contractor satisfaction

IMPROVED BUILDING APPEARANCE

- ✓ Transforms old buildings to look like new
- ✓ Metal roofs are a popular design style
- ✓ Lightweight framing systems give architects more roof design options

FLAT ROOFS AREN'T REALLY FLAT.

It's this simple: Water "ponds" on flat roofs. Where water ponds, leaks develop. Leaks lead to damage. Damage leads to costly repairs. It's a never ending cycle, unless a sloped retrofit roof replaces that old, flat, high-maintenance roof. Sloped **metal** roofs offer superior roof performance, reduced maintenance costs, and can greatly enhance the building's overall appearance and thermal performance.



SLOPED BEATS FLATSM. Year After Year.

The backbone of any well-built, sloped metal reroof project is a custom-designed, engineered and pre-cut framing system designed by ReRoof America, Inc. (RRA). RRA helped create the sloped metal reroof industry and is indeed the leader in retrofit framing systems. In fact, RRA has been providing the highest quality retrofit framing systems to the industry for over 20 years. Now *that's* peace of mind!

RRA's retrofit framing systems feature the *patented Adjust-a-Web™ System*, which creates a framing system for a new even roof slope and virtually eliminates the need for costly and time-consuming field cutting of the vertical framing members.



RRA can engineer a lightweight framing system to fit any roof, fascia and soffit system capable of transforming that old, flat, leaking roof into an attractive, high-performance, low-maintenance and long-life asset.



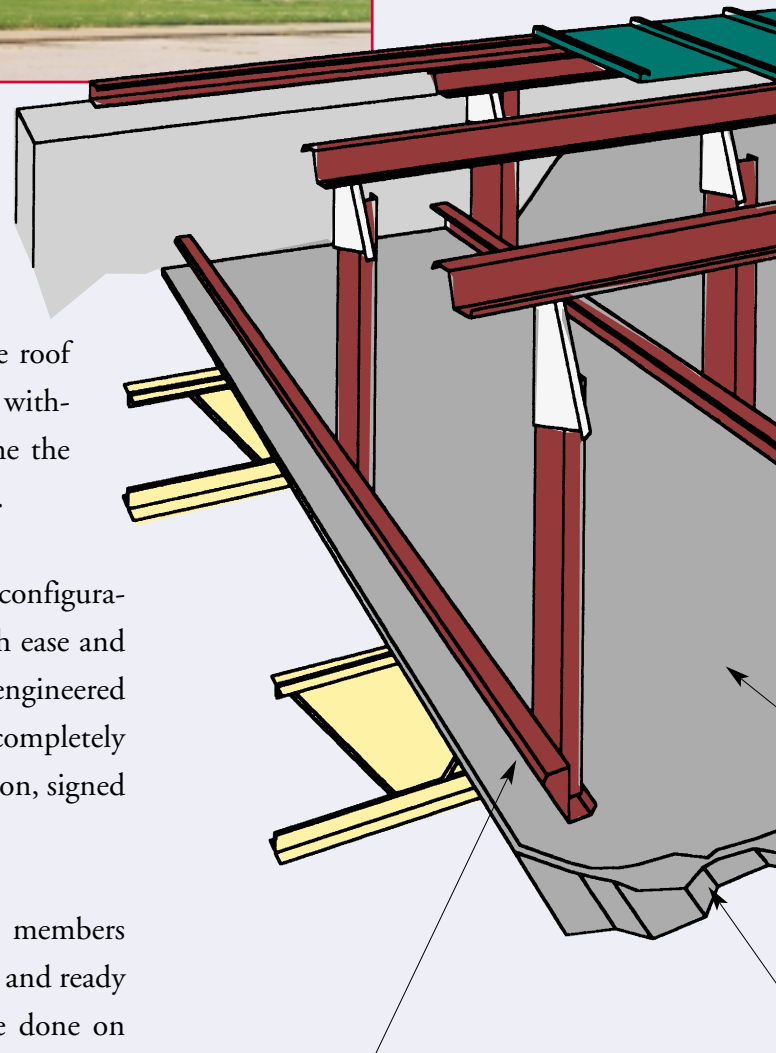


CURA® ADJUST-A-WEB™ Saves Time And Money.

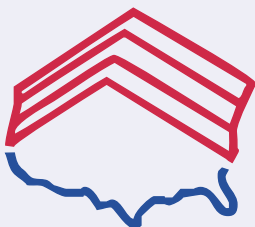
Adjust-a-Web framing systems effectively transfer the roof loads into the existing structural system (in most cases without the need for expensive roof tear-off) and become the foundation for the new sloped roof, facade and soffit.

The Adjust-a-Web System can handle complex roof configurations and slopes from 1/4:12 to 12:12 or greater with ease and is routinely used to over 20' heights. Each system is engineered to your specifications by RRA's staff who provide completely detailed shop drawings and construction documentation, signed and sealed by a Professional Engineer.

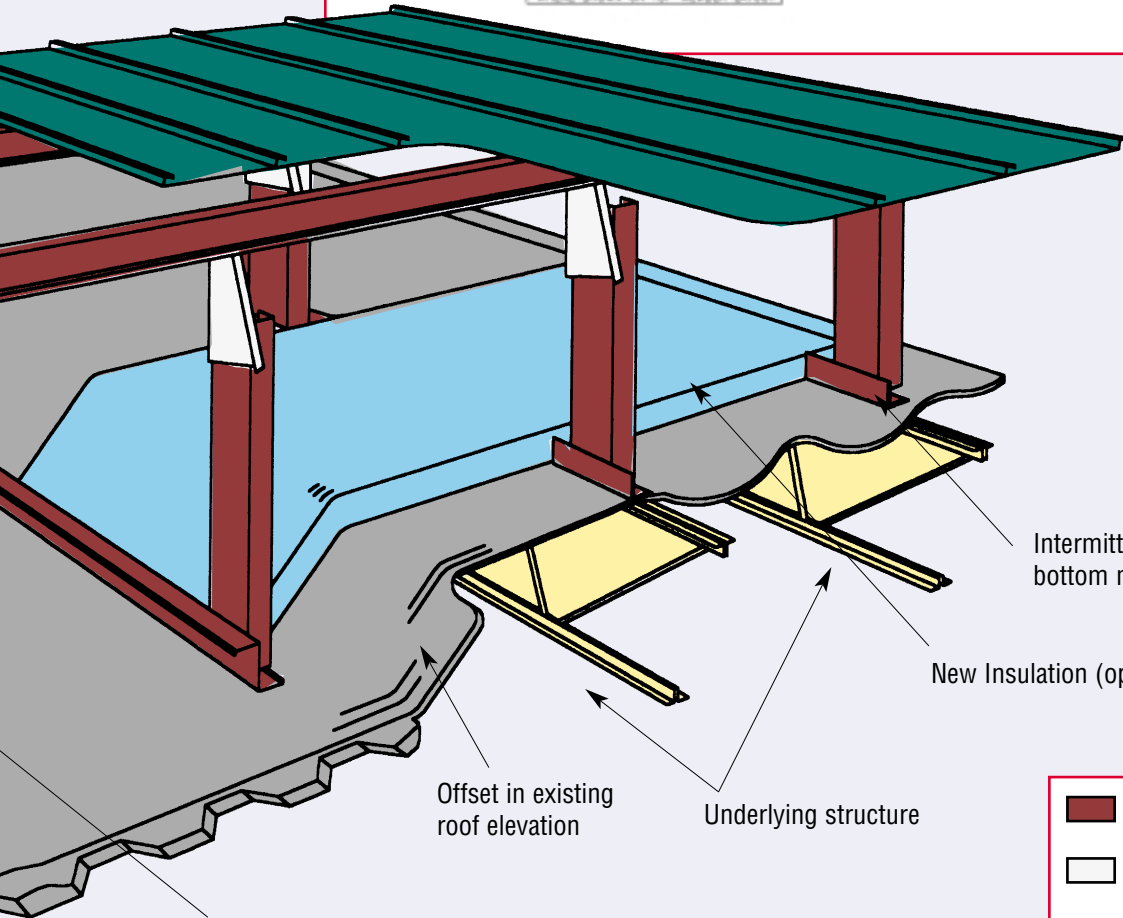
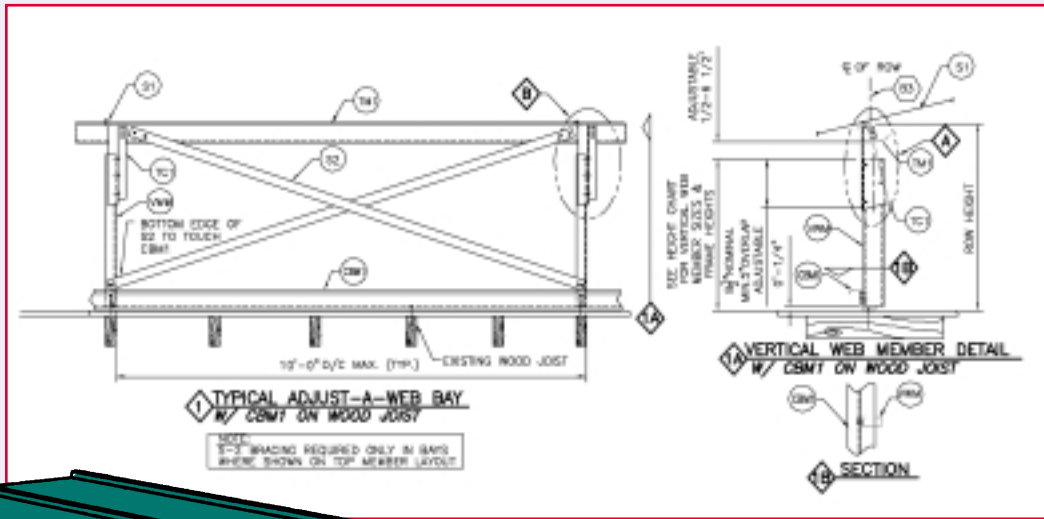
The horizontal members, vertical members, bottom members and top clips arrive on the jobsite factory-cut, marked and ready for installation on that specific project. This can be done on virtually any existing underlying structural configuration.



Cross-directional bottom member



ReRoof America, SM Inc.

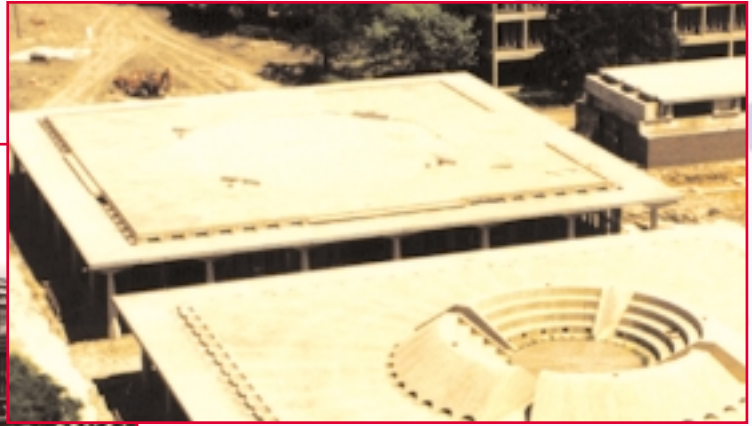
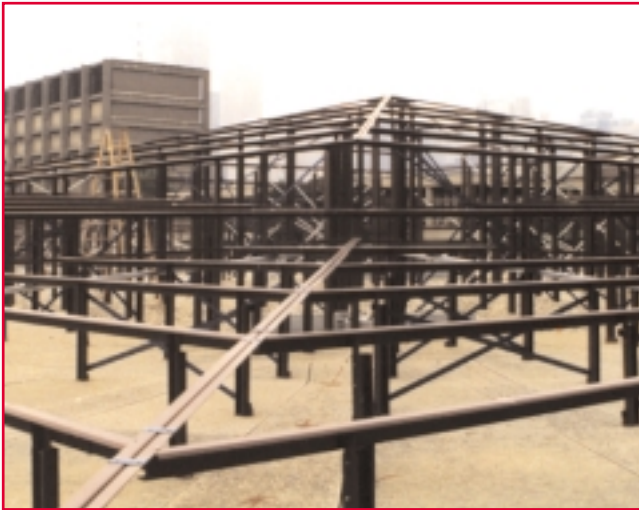


	Light Gauge Retrofit Framing
	Adjustable Top Clips*
	New Roof Panel

* Note adjustable difference in overlap with vertical web member to accommodate offset in roof elevation.

Existing roof deck

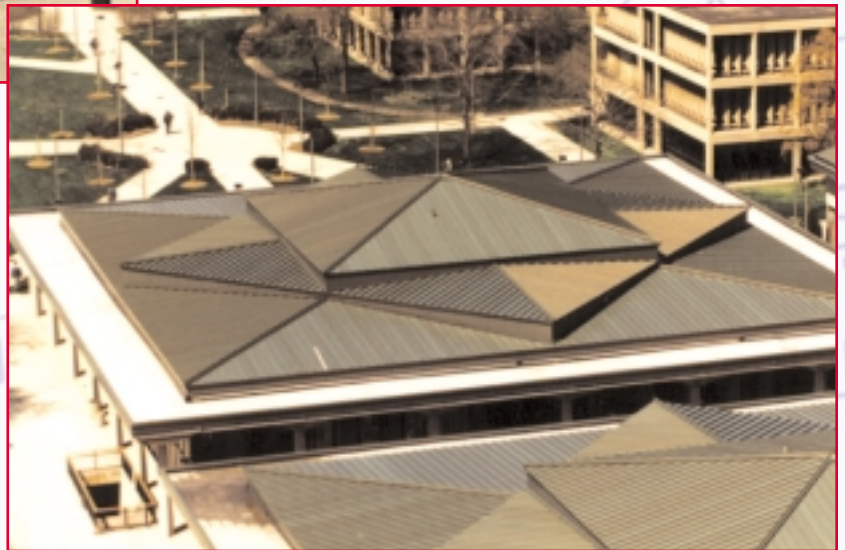




ReRoof of the Year (Metal Construction News)
University of Illinois – Chicago.

When it comes to retrofit reroofing, ReRoof America, Inc. is *the choice* for framing systems. Give us the opportunity to be your partner in retrofit reroofing...you'll be glad you did.

For more information, design assistance or quotes, call us toll free: 1-800-280-2872.



**ReRoof
America, SM Inc.**

**6717 South Yale Avenue, Suite 200 • Tulsa, OK 74136
800-280-2872 • 918-492-2072 • 918-493-3568 fax
www.reroof-america.com**

Cura[®], ReRoof America, Adjust-a-Web, Sloped Beats Flat are marks of HSI.
US Patents 4,620,397; 4,602,468, 4,534,148; 4,520,610; 4,835,917; 5,005,323; 5,142,838; 5,303,528. Other patents pending.

Technical Information: Cura Adjustable Reroof Framing Systems are custom designed by professional engineers in accordance with good engineering practice and will transmit the specified, uniformly-applied new roof load through the Cura Adjustable Frame directly to the underlying structure. This load transfer will result in concentrated loads occurring on the existing structure. The buyer should make certain that the Cura System is properly erected and braced, and does not cause undesirable effects to occur in the existing structure, and that its use meets all applicable code, insurance, government and good engineering requirements. Cura Adjustable Reroof Framing Systems are protected by Cura Patents licensed to ReRoof America, Inc. Systems that incorporate adjustability for reroofing infringe the patents.